

**Welcome to Jenice Wheeler, our new
ATTHEA Executive Committee
President ATTHEA
Education Manager – Tourism, Events,
Hospitality & Languages - TAFESA**



I have had a long association with Education, having originally trained as a high school teacher and taught in schools for 9 years. My transition into TAFE – now 18 years ago has enabled to grow and extend my background in the field of both education and training and I am very passionate about ensuring all students

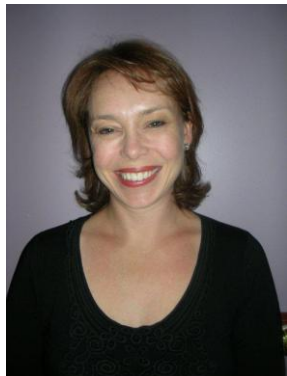
who attend and participate in our courses at TAFE SA in the Tourism, Events, Hospitality and Languages program receive first class education and training.

Being part of ATTHEA ensures that South Australia remains up to date with what is happening around Australia in our industry sector, through professional conversations and meetings with others TAFE Managers and teaching staff.

We look forward to welcoming all of our colleagues to Adelaide for the next ATTHEA Conference in April 2011.

MEET SOME OF OUR NEW EXECUTIVE COMMITTEE

BELINDA McPHERSON – SOUTH AUSTRALIA



I am an Educational Manager in the Hospitality Programme at TAFE SA, Regency Campus. I have been in this position for the last 7 years and at TAFE for 10 years. I am a former hospitality student from Regency and graduated with a Diploma in 1994. My work history has been primarily in hospitality food

and beverage, as well as working in the capacity of a wedding coordinator at Mount Lofty House (Adelaide Hills) and Travel Manager in the Tourism sector. I am very passionate about Hospitality and Education and

believe I am in the perfect role to make a difference to our future industry sector and also enhancing career choices for our students.

MONDI KAROUSSIS – SOUTH AUSTRALIA

"Hi" my name is Mondy Karoussis and I am currently on the ATTHEA executive representing TAFE SA Regional Institute. I have been with TAFE SA for 15 years and my current title is Advanced Skills Lecturer 2. I have been in the hospitality industry all my life, some 30 years, in the capacity of owner/employer and employee. I currently still work part time in industry at the Sebel Playford Hotel Adelaide as a restaurant supervisor. I am very passionate, committed and dedicated to the future of training in hospitality in TAFE and the industry at large. My efforts have been recognised nationally through winning several awards, over the past five years. Namely: "Individual Training Excellence", "Outstanding Contributions to Industry", "Leadership and Commitment" and "Individual National Trainer Award".



SECRETARY- TREASURER: ANNE BAILEY – SOUTH AUSTRALIA

I have worked as a Lecturer in the Tourism faculty of TAFESA Regional since 2005, first in Port Lincoln and for the past year at Mt Barker campus.

During my 30 years of working life, I have worked in many areas of the tourism, hospitality and fishing industries. Prior to joining TAFESA, I owned and operated my own Nationally Accredited Kayaking and Tour Guiding business in Port Lincoln. I love educating the future operators and leaders of the Tourism industry and particularly enjoy sharing knowledge and learning from my students. I am looking forward to contributing to an organisation, who encourages and facilitates the sharing of knowledge & experiences for its members.





I have been a trainer in both the private and public sectors for over 15 years. During this time I facilitated a project consultancy for the University of New England partnerships, and was a training consultant for Tourism Training Australia and taught Tourism at Armidale TAFE.

Currently, I am the Industry Specialist under the Lead

Institute model, for TAFE QLD. My industry experience includes owning/operating a rural tourism retreat in the New England region and most recently as General Manager of Yaraandoo Eco Lodge and Function Centre near Armidale.

I have been fortunate to experience many interesting career highlights including developing and conducting professional development workshops for Service Industries Skills Council to registered training organisations across Australia and the establishment of New England Institute of TAFE wholesale/inbound Tourism Training programs.

I have been the recipient of the "Platinum Award" in 2004 by Tourism Training Australia for Outstanding achievement – "the will to do and the soul to dare" presented by Tony Abbott MP for 'recognition of outstanding services and support to the Tourism industry in Australia and the "National Trainer's Award" in 1998.



Outgoing President Reg Edwards



Janniene McDonald

PICTURES FROM THE ATTHEA CONFERENCE 2009



Christine Pontin from Kangan Batman TAFE Victoria enjoys a chat with Nick Turner, TAFESA.



Geoff Buckley from Tourism Australia

ATTHEA FELLOWSHIP 2011 ARE NOW OPEN!!!

**Would you like to be awarded
\$3,000 to develop an educational
project or program?**

**Download your application now
from <http://www.atthea.edu.au>**

**APPLICATIONS CLOSE: 31st
AUGUST, 2010.**



TASTING AUSTRALIA 2010

Congratulations go out to all the competitors in this year's cooking competition travelling from most corners of Australia and all sharing the one goal, of winning the Tasting Australia's Lifestyle FOOD Channel Australian Regional Culinary Competition. All of the Commercial Cookery staff at Regency TAFESA, spent Friday and Saturday working tirelessly to make the competitors feel welcome and to make their experience at RIC a memorable one.



A wide range of dishes were presented to the Judges including David Sly; Heidi Van Gerwen; John Lethlean; Kate Lamont; Pete

Evans; Rob Broadfield; Simon Bryant; Stuart Walsh; Mark McNamara; Matthew Evans; Don Hancey; Tony Tan; Chris Jarmer, Philippe Clergue and Frank Camorra. The Standards shown from the competitors were of a very high standard but today's modern flare and presentation stood out by a select few.

The Tasting Australia's Lifestyle FOOD Channel Australian Regional Culinary Competition awards night was a who's who of the culinary world from

overseas and around Australia including Rosemary Shrager and Antony Worrall Thompson from the United Kingdom. Irish born Paul Rankin and Italy's Antonio Carluccio, presenters including Joanna Savill, Will Studd, Maeve O'Meara, Shannon Bennett, Pete Evans, Anna Gare, Stephanie Alexander, Maggie Beer, Lyndey Milan, Paul Mercurio, Poh Ling Yeow, Ed Halmagyi, Jill Norman, Darren Simpson, Frank Camorra and Simon Bryant.



**The nights
winner were:**
**Gold Award Best
Region - The
Manse, Adelaide
City**
**Silver Award Best
Region -
Greenhouse,
Perth**

Bronze Award Best Region - TasSouth, Tasmania
Best Apprentice - Cameron Perry - TasSouth, Tasmania
Best Food and Wine Matching - Greenhouse, Perth
Best Entree - The Manse, Adelaide City
Best Main Course - The Manse, Adelaide City
Best Dessert - The Manse, Adelaide City

NEWSFLASH!!!

**A date has been set for
ATTHEA CONFERENCE 2011
The conference will be held
in Adelaide on 6th 7th & 8th
April, 2011 and will
commence with drinks and
networking on the
Wednesday night.**

**Our conference committee
are currently planning for an
exciting conference filled
with opportunities to get you
connected with your
interstate colleagues.**

**Watch this space and
check out the website:
<http://atthea.edu.au> for
updated information.**

Talking about culture - getting it right



From left: Shirley Lynn, Cindy Barlow, Pamela Bigelow

The problem/opportunity being addressed:

"Talking about Culture- Getting it right" will be an e-learning resource that incorporates Indigenous specific content aligning with a core Unit SITTGDE009A Interpret aspects of local Australian Indigenous culture, from the new Certificate I in Tourism (Australian Indigenous Culture) qualification. This Unit is also an elective option in other Tourism qualifications, from Cert II - Adv Diploma.

The content of this unit should be delivered in conjunction with and with the permission of appropriate local Indigenous Elders or those authorised by elders of the area. Many non Indigenous delivery staff find it difficult access arrangements with appropriate local community people, and some students living in remote locations experience restricted access to training.

The resource will guide Learners via Indigenous avatars and will engage them in activities to discover content and methodology from interviews and case studies of successful Indigenous Tourism ventures. Progress will be monitored through a range of "character with a challenge" type authentic settings and scenarios.

As well as culminating in the production of Learning Objects, the project will produce an e-learning resource contextualised for an Indigenous audience. It will be designed to "close the gap" by making training more accessible, leading to employment outcomes.

The learners/clients and how they will benefit:

This Certificate I level course is designed to engage Indigenous learners who have limited or no previous study experience and may have low literacy and numeracy skills.

Feedback we have gathered from training organisations, is that currently poor uptake of this

Unit is mostly due to a lack of trainer/assessors that have access to local Indigenous Elders or the rights to teach the cultural content required for the successful completion of this unit, as well as offering options for learning for students that live in remote locations.

By developing an e-learning resource, based on engagement with authentic activities and contextualised for students with a range of English literacy abilities more Indigenous learners will be able to undertake study of this unit. The resource will also address the issue of distance, as remote learners will be able to engage with learning in their own communities.

There are some existing resources from which content could be adapted, including a Series 3 Toolbox (released 2001) that includes content aligning to the previous Training Package (THT98).

This resource is being developed for use by training organisations delivering training to Indigenous learners. The resource is being developed so that it can form part of a classroom based delivery program, or can be used by student?s independently, studying in their own communities.

How the innovation will change current delivery: The Unit "SITTGDE009A Interpret aspects of local Australian Indigenous culture" must incorporate input by elders or those who are authorised by local elders on behalf of their communities. The focus of the content and learning delivered in this unit will vary according to the local language group and the content should ultimately be decided upon in consultation with elders on behalf of the local community.

This e-learning resource will assist non indigenous and/or non local teachers in the delivery of this unit by providing access to interviews, case studies and transcripts from Indigenous people engaged in successful Tourism operations and provide suitable activities that facilitate the learning of appropriate Indigenous protocols through the presentation of successful role models that will allow students to identify appropriate methods to determine; what, how and by whom Indigenous culture may be shared with clients in a tourism operation.

[Please note that links and attachments from this page may take you to E-learning Innovations project content that has not been endorsed by the Australian Flexible Learning Framework (Framework). This includes content which may be on external websites. The Framework does not take responsibility for any user-generated content other than officially endorsed Framework content, which can be found in the [Toolbox Repository](#) or the [Framework Resources Database](#).]